



2019 SONAR WORLD CHAMPIONSHIP

September 17 – 22, 2019

Rochester Yacht Club
Rochester, New York

SAILING INSTRUCTIONS

1. RULES

- 1.1 The regatta will be governed by the rules as defined in The Racing Rules of Sailing (RRS).
- 1.2 Only the prescriptions of US Sailing to The Racing Rules of Sailing listed in Attachment A will apply.
- 1.3 The Sonar Class Association Constitution, By-Laws, Class Rules and Rules Governing the Sonar Class World Championship (collectively, SCA Rules) will apply.

2. NOTICES TO COMPETITORS

- 2.1 Notices to competitors will be posted on the official notice board located next to the Burgee Bar.
- 2.2 Any questions concerning these sailing instructions, scoring, or any other racing issues shall be submitted in writing to the Race Committee (RC). All written inquiries and responses will be posted on the official notice board.

3. CHANGES TO SAILING INSTRUCTIONS

- 3.1 Any change to the sailing instructions will be posted before 0830 on the day it will take effect, except that any change to the schedule of races will be posted by 2000 on the day before it will take effect.

4. SIGNALS MADE ASHORE

- 4.1 Signals made ashore will be displayed on the main flagpole at the RYC, located on the northwest corner of the property.
- 4.2 When flag AP is displayed ashore, '1 minute' is replaced with 'not less than 45 minutes' in the race signal AP. This changes race signals.
- 4.3 Flag B hoisted with one sound signal means "Protest time has begun."
- 4.4 When flag Y is displayed ashore, rule 40 applies at all times while afloat. This changes the Part 4 preamble.



5. SCHEDULE OF RACES

5.1 It is the intent of the Race Committee to run as many races as practical on each race day, up to a maximum of four (4) per day, with a maximum total of twelve (12) races for the series.

5.2 Wednesday, September 18

1500 Practice Race Warning Signal

Thursday, September 19

1000 First Warning Signal

Friday, September 20

1000 First Warning Signal

Saturday, September 21

1000 First Warning Signal

Sunday, September 22

0930 First Warning Signal

1400 No warning signals after 1400

6. FLAGS, EVENT BOW STICERS, BOW NUMBERS

6.1 The class flag shall be the Sonar Class Flag.

6.2 Bow numbers will be assigned and shall be displayed on both sides of the bow approximately 50-150 mm below deck level and with the forward most point within 200mm of the bow. Instructions will be included with the bow numbers/ stickers in the Skipper's Package.

7. RACING AREA

The center of the racing area will be on Lake Ontario within approximately 2 nautical miles beyond the end of the Genesee River breakwater. Attachment B shows the approximate location of the racing area.

8. CHECK IN AND CHECK OUT

8.1 Boats shall check in with the race committee signal boat by sailing on starboard past the stern of the signal boat and hailing their sail number before their first start of the day.

8.2 Boats that retire during a race or leave the racing area between races shall check out with the race committee either by hail or on VHF (72).

9. COURSES

- 9.1 The diagrams in Attachment C show the courses, including the approximate angle between legs, the order in which marks are to be passed, and the side on which each mark is to be left. Course LA2 will be signaled with numerical pennant 2. Course WA3 will be signaled with numerical pennant 3.
- 9.2 No later than the warning signal, the race committee signal vessel will display the course to be sailed, the approximate distance and compass bearing of the first leg. This information may be broadcast on VHF (72). Failure to broadcast or receive this notification on VHF (72) will not constitute grounds for requesting redress. This changes RRS 62.1 (a).
- 9.3 The leeward gate will be set approximately 0.1 nautical miles to windward of the starting line. If the gate is replaced by a single mark, it shall be left to port. The gate may be laid or adjusted after the starting signal.

10. MARKS

- 10.1 Marks 1, 2S and 2P will be orange tetrahedrons.
Mark 1a will be a small orange tetrahedron
- 10.2 Starting and finishing marks will be yellow cylinders.
- 10.3 New marks, as provided in SI 12, will be green tetrahedron (mark 1), small green tetrahedron (mark 1a), and yellow tetrahedrons (marks 2S and 2P)

11. THE START

- 11.1 The RC signal boat will display flag L with one sound signal as it departs the harbor.
- 11.2 The starting line will be between a staff displaying an orange flag on the signal boat and either the course side of a nearby inflatable mark or a staff displaying an orange flag on a RC boat.
- 11.3 The RC will attempt to hail individual recalls on VHF (72) using bow or sail numbers. This changes RRS 29.1. The failure to hail, the hail of some but not all boats, or the untimely hail of a boat or boats shall not be grounds for requesting redress. This changes RRS 62.1 (a).
- 11.4 As a courtesy, the bow or sail numbers of the boats scored OCS, UFD or BFD may be posted at the weather mark on a white board by a RC boat.
- 11.5 A boat starting later than 5 minutes after her starting signal will be scored Did Not Start (DNS) without a hearing. This changes RRS A4 and A5.



12. CHANGE OF THE NEXT LEG OF THE COURSE

To change the next leg of the course, the RC will lay a new mark (or move the finishing line) and remove the original mark as soon as practicable. When in a subsequent change a new mark is replaced, it will be replaced by an original mark.

13. THE FINISH

- 13.1 The finishing line will be between a staff displaying an orange flag on the finishing line boat and either the course side of a nearby inflatable mark or a staff displaying an orange flag on a RC boat.
- 13.2 The gate marks and/or the windward marks may be removed before boats finish.
- 13.3 Flag Second Substitute displayed (no sound signal) by the RC finish boat while boats are finishing indicates that another race may be sailed. This changes RRS Race Signals

14. PENALTY SYSTEM

- 14.1 A boat that has taken a penalty or retired under rule 44.1 shall complete and submit an acknowledgment form available at the protest committee desk within the protest time limit.
- 14.2 A boat that may have broken a rule of Part 2 or RRS 31 while racing may take a post-race penalty. The details of this are as per SI 16.9. All boats that have taken a scoring penalty shall submit a written declaration prior to the start of the protest hearing. This changes Part 5, Section B of the RRS.
- 14.3 The jury may apply discretionary penalties for infractions of the rules other than RRS 2, Rules of Part 2, or RRS 31.

15. TIME LIMITS

- 15.1 If no boat has passed Mark 1 within 40 minutes the race will be abandoned.
- 15.2 The time limit for the first boat to finish the race is 120 minutes.
- 15.3 Boats failing to finish within 30 minutes of the first boat sails the course and finishes will be scored Did Not Finish (DNF) without a hearing. This changes RRS 35, A4, and A5.

16. PROTESTS AND REQUESTS FOR REDRESS

- 16.1 Protest forms are available at the protest committee office. Protests shall be delivered there within the protest time limit.
- 16.2 As the RC signal boat docks the RC will display flag B with one sound ashore (see SI 4.3) and post the time limit on the official notice board. The protest time limit is 60 minutes after the display of this signal. This changes RRS 61.3 and 62.2.
- 16.3 Notices will be posted no later than 30 minutes after the protest time limit to inform competitors of hearing in which they are parties or named as witnesses. Hearing will be held in protest committee room, located at the RYC office (located in a house on the east side of the property). Protests referred to the protest committee from the arbitrators will be added to the list of scheduled protests as they become available from arbitration.



-
- 16.4 Notices of protest by the RC or protest committee will be posted to inform boats under RRS 61.1(b).
- 16.5 Breaches of SI 6,8,18,19,20,21,22,23,24,26,27 and NOR 2,7,13,16,17 will not be grounds for a protest by a boat. This changes RRS 60.1(a). Penalties for these breaches and for class rule breaches may be less than disqualification if the protest committee so decides. The scoring abbreviation for a discretionary penalty imposed under this SI will be DPI.
- 16.6 If the RC posts a list of boats scored OCS, ZFP, UFD, or BFD on the official notice board before the protest time limit, a request for redress based on such a posted score shall be made no later than one hour after the protest time limit. This changes RRS 62.2.
- 16.7 On the last scheduled day of racing a request for reopening a hearing shall be delivered: (a) within the protest time limit if the party requesting reopening was informed of the decision on the previous day or (b) no later than 30 minutes after the party requesting reopening was informed of the decision that day. This changes RRS 66.
- 16.8 On the last scheduled day of racing a request for redress based on a protest committee decision shall be delivered no later than 30 minutes after the decision was posted. This changes RRS 62.2.
- 16.9 WS APPENDIX T: ARBITRATION T1, T2, T3 and T4 will apply as changed:
T1(b) A post race penalty is a 20% Scoring Penalty if taken before the protest time limit or a 30% Scoring Penalty if taken after the protest time limit but before the beginning of a hearing involving the incident. Scoring Penalty calculated as stated in rule 44.3(c). However, rule 44.1(a) applies.
- 16.10 Decisions of the international jury will be final as provided in RRS 70.5.

17. SCORING

- 17.1 Four (4) races are required to be completed to constitute a series.
- 17.2
- (a) When fewer than six (6) races have been completed, a boat's series score will be the total of her race scores.
 - (b) When from six (6) to nine (9) races have been completed, a boat's series score will be the total of her race scores excluding her worst score.
 - (c) When ten (10) or more races have been completed, a boat's series score will be the total of her race scores excluding her two worst scores.



18. SAFETY

It is the responsibility of the skipper of each boat to assure the proper equipment is on board and that the boat is handled in a safe manner.

19. REPLACEMENT OF COMPETITORS OR EQUIPMENT

- 19.1 Substitution of competitors will not be allowed without prior written approval of the Race Committee.
- 19.2 Substitution of damaged or lost equipment will not be allowed unless authorized by the Race Committee. Requests for substitution shall be made at the first reasonable opportunity.

20. EQUIPMENT AND MEASUREMENT CHECKS

A boat or equipment may be inspected at any time for compliance with the class rules. On the water, a boat can be instructed by a race committee equipment inspector or measurer to proceed immediately to a designated area for inspection.

21. ADVERTISING

- 21.1 A boat and her crew shall comply with ISAF Regulation 20, Advertising Code.
- 21.2 Boats may be required to display identification numbers and sponsors advertising for the duration of the event in accordance with ISAF Regulation 20.4. These items will be supplied free of charge by the organizing authority (OA) at registration.

22. HAUL-OUT & DEHUMIDIFIER RESTRICTIONS

- 22.1 Boats shall be afloat by 0830 on Thursday, September 19 and shall not be hauled out during the regatta except with and according to the terms of prior written permission of Race Committee.
- 22.2 Dehumidifiers shall not be used in boats after 0830 on Thursday, September 19.

23. DIVING EQUIPMENT AND PLASTIC POOLS

Underwater breathing apparatus and plastic pools or their equivalent shall not be used around boats between the preparatory signal of the first race and the end of the regatta.

24. RADIO COMMUNICATION

- 24.1 Except in an emergency, a boat that is racing shall not make voice or data transmissions and shall not receive voice or data communication that is not available to all boats.
- 24.2 The RC will use VHF radio, Channel 72, to communicate to the fleet, including the location of the starting area, countdown to the start, OCS bow/ sail number General Recalls and Postponements. Failure to make these broadcasts or failure to include a bow#/sail# or failure to hear them shall not be grounds for requesting redress. This changes RRS 62.1.



25. PRIZES

Prizes will be awarded to the skipper and crew of the first five boats in the series.

26. DISCLAIMER OF LIABILITY

- 26.1 Competitors participate in the regatta entirely at their own risk. See rule 4, Decision to Race. The organizing authority will not accept any liability for material damage or personal injury or death sustained in conjunction with or prior to during, or after the regatta.
- 26.2 All competitors will also be required to sign a Competitors Liability Waiver form during registration.

27. INSURANCE

Each participating boat shall be insured with valid third-party liability insurance with a minimum coverage of US\$500,000 and it is the owner or owners' representative's sole and inescapable responsibility to ensure that the insurance is in place and is adequate prior to participating in this event. The Organizing Authority may ask for a copy of your insurance binder.



ATTACHMENT A – US Sailing Prescriptions

The following US SAILING prescriptions to rules 61.4, 67, 76.1 and Appendix V1 shall apply.

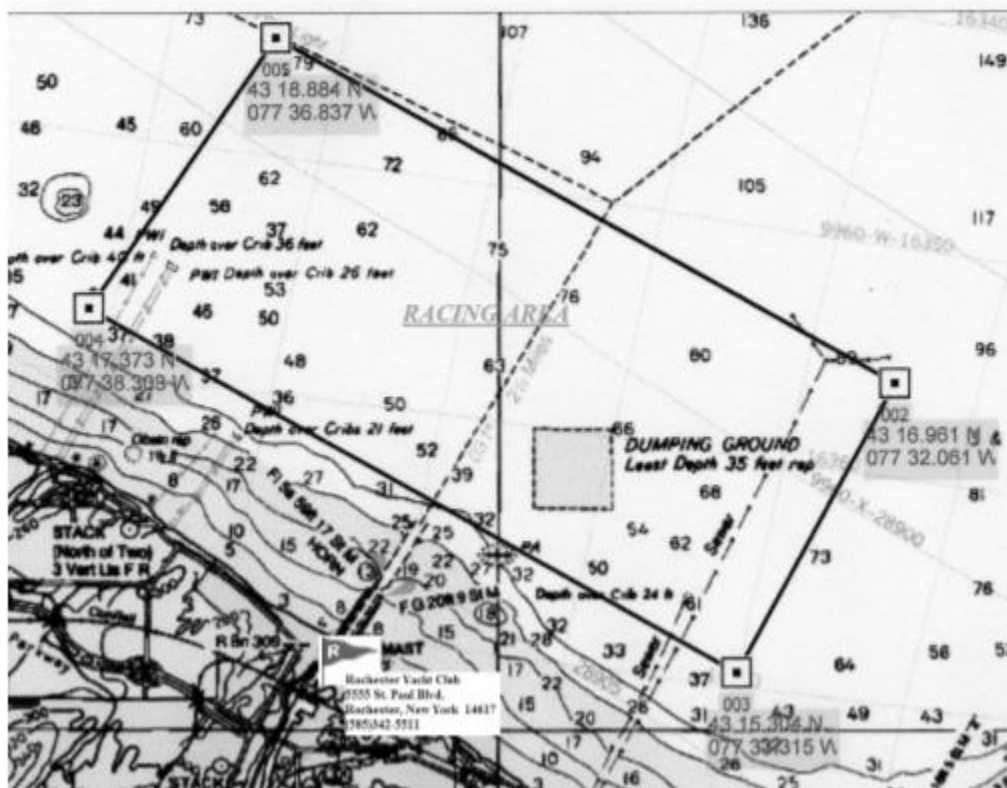
- A1. Add rule 61.4:
“US Sailing prescribes that no fees shall be charged for protests or requests for redress.”
- A2. After rule 67 add:
“US Sailing prescribes that:
(a) A boat that retires from a race or accepts a penalty does not, by that action alone, admit liability for damages.
(b) A protest committee shall find fact and make decisions only in compliance with the rules. No protest committee or US Sailing appeal authority shall adjudicate any claim for damages. Such a claim is subject to the jurisdiction of the courts.
(c) A basic purpose of the rules is to prevent contact between boats. By participating in an event governed by the rules, a boat agrees that responsibility for damages arising from any breach of the rules shall be based on fault as determined by the application of the rules, and that she shall not be governed by the legal doctrine of ‘assumption of risk’ for monetary damages resulting from contact with other boats.”
- A3. After rule 76.1 add:
“US Sailing prescribes that an organizing authority or race committee shall not reject or cancel the entry of a boat or exclude a competitor eligible under the notice of race and sailing instructions for an arbitrary or capricious reason or for reason of race, color, religion, national origin, gender, sexual orientation, or age.”
- A4. Add Appendix V1:

V1 PENALTY AT THE TIME OF AN INCIDENT

The first two sentences of rule 44.1 are changed to: ‘A boat may take a One-Turn Penalty when she may have broken one or more rules of Part 2 or rule 31 in an incident while racing. However, when she may have broken one or more rules of Part 2 while in the zone around a mark other than a starting mark, her penalty shall be a Two-Turns Penalty.’

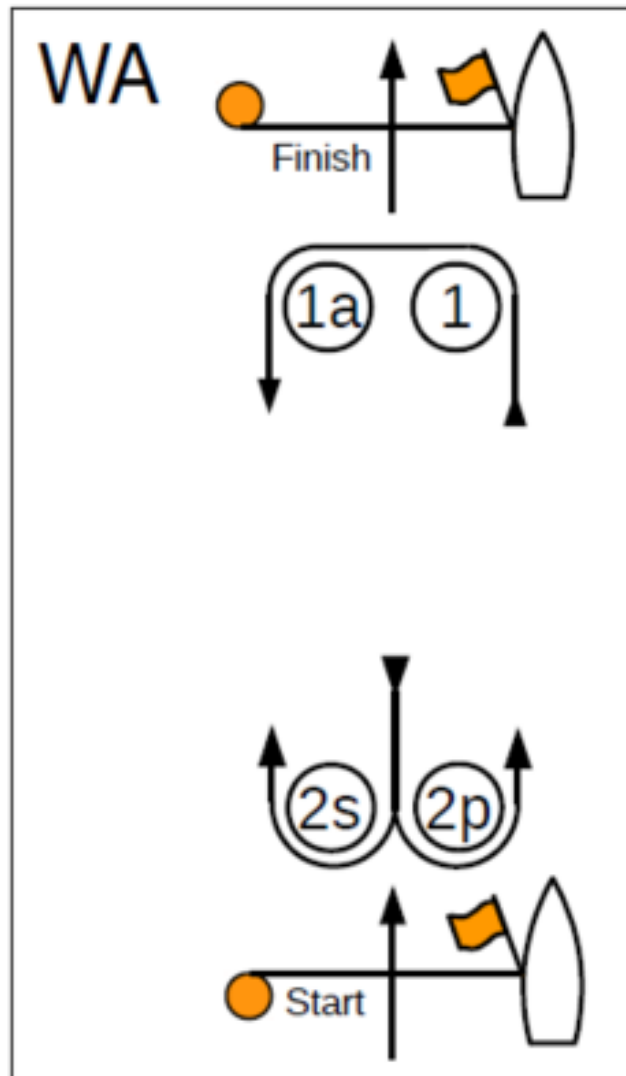
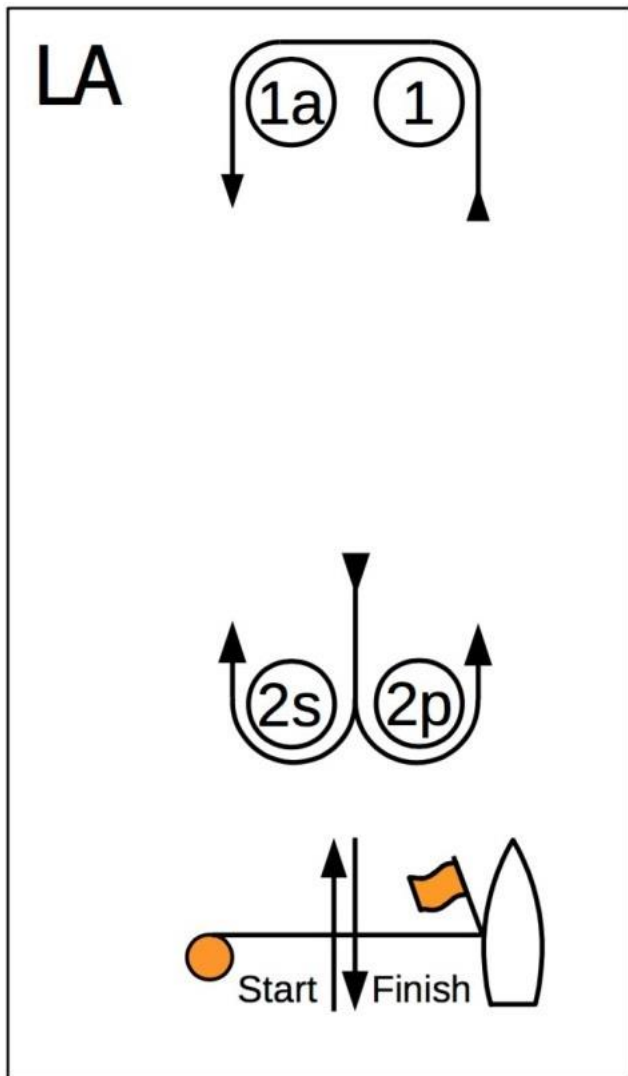
ATTACHMENT B – Racing Area

Dependent on weather conditions the RC will attempt to use the approximate racing area shown below.



Not to be used for navigation.

ATTACHMENT C – Courses



Course LA – Windward/Leeward with Offset Mark, Leeward Finish	
<i>Signal</i>	<i>Mark Rounding Order</i>
LA2	Start – 1 – 1a – 2s/2p – 1 – 1a – Finish

Course WA – Windward/Leeward with Offset Mark, Windward Finish	
<i>Signal</i>	<i>Mark Rounding Order</i>
WA3	Start – 1 – 1a – 2s/2p – 1 – 1a – 2s/2p – Finish